



Monmouth County Park System Creative Arts Center Expansion at Thompson Park PROJECT INFORMATION

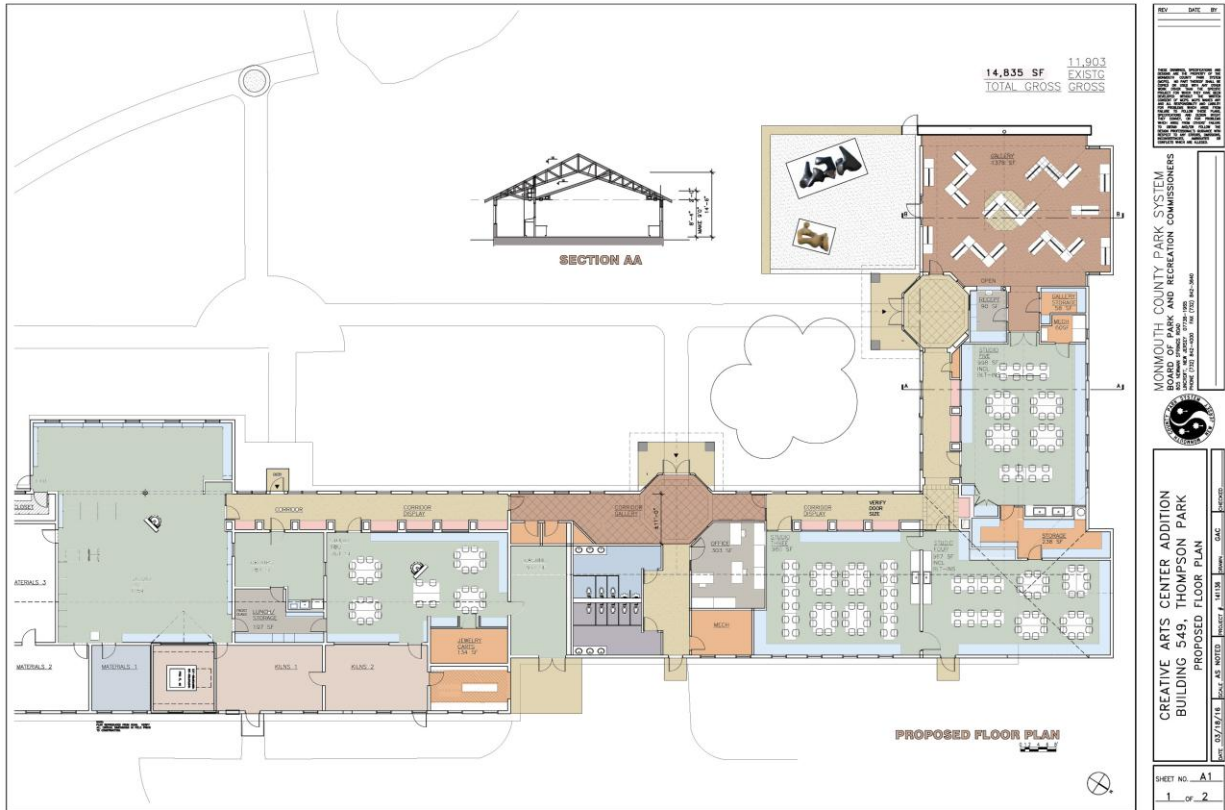
PROJECT DESCRIPTION: This project will expand the highly successful Creative Arts Center in Thompson Park by providing an additional 2900 square feet of space for programs and display areas. The new wing will add to include a gallery with an outdoor patio and another studio as well as a new entry and much-needed storage space for program supplies and materials.

REASON FOR PROJECT: The Creative Arts Center was formerly the main dairy barn of Marlu Farm before the Park System purchased the property as an addition to Thompson Park in 1986. The Park System converted the barn into pottery and ceramics studios in the early 1990s to accommodate the growing programs. The building contains two pottery/ceramics studios, two painting studios, a small party room, an office and a storage room. Participation and demand for art programs has increased, and the current building is at its occupancy limit. An annual seasonal art show where artists sell their works is very successful, giving these programs exposure, providing income from commissions and furthering interest in ongoing gallery shows and sales.

DESIGN APPROACH: To provide architectural enhancement to a major facility in Thompson Park while expanding the overall space and improving interior circulation and functionality.

PROJECT STATUS: *A construction contract was awarded. Footings, foundations and floor were installed and some steel was erected. Unfortunately the contractor has run into difficulty and the project stalled. The Park system is negotiating to restart the project and hopes to have it completed by the Spring of 2019.*

CONTACT INFORMATION: Joseph Sardonia, Supervising Landscape Architect
Monmouth County Park System, Acquisition & Design Department
Joe.sardonia@co.monmouth.nj.us



1 Creative Arts Center Expansion



2 Creative Arts Center Spring

Updated August 6, 2018



3 Adult Jewelry Class