

# Replacement of Monmouth County Bridge S-32 on Rumson Road (CR-520) over the Shrewsbury River – Preliminary Engineering Phase



**Public Information Center**

**June 8, 2016**



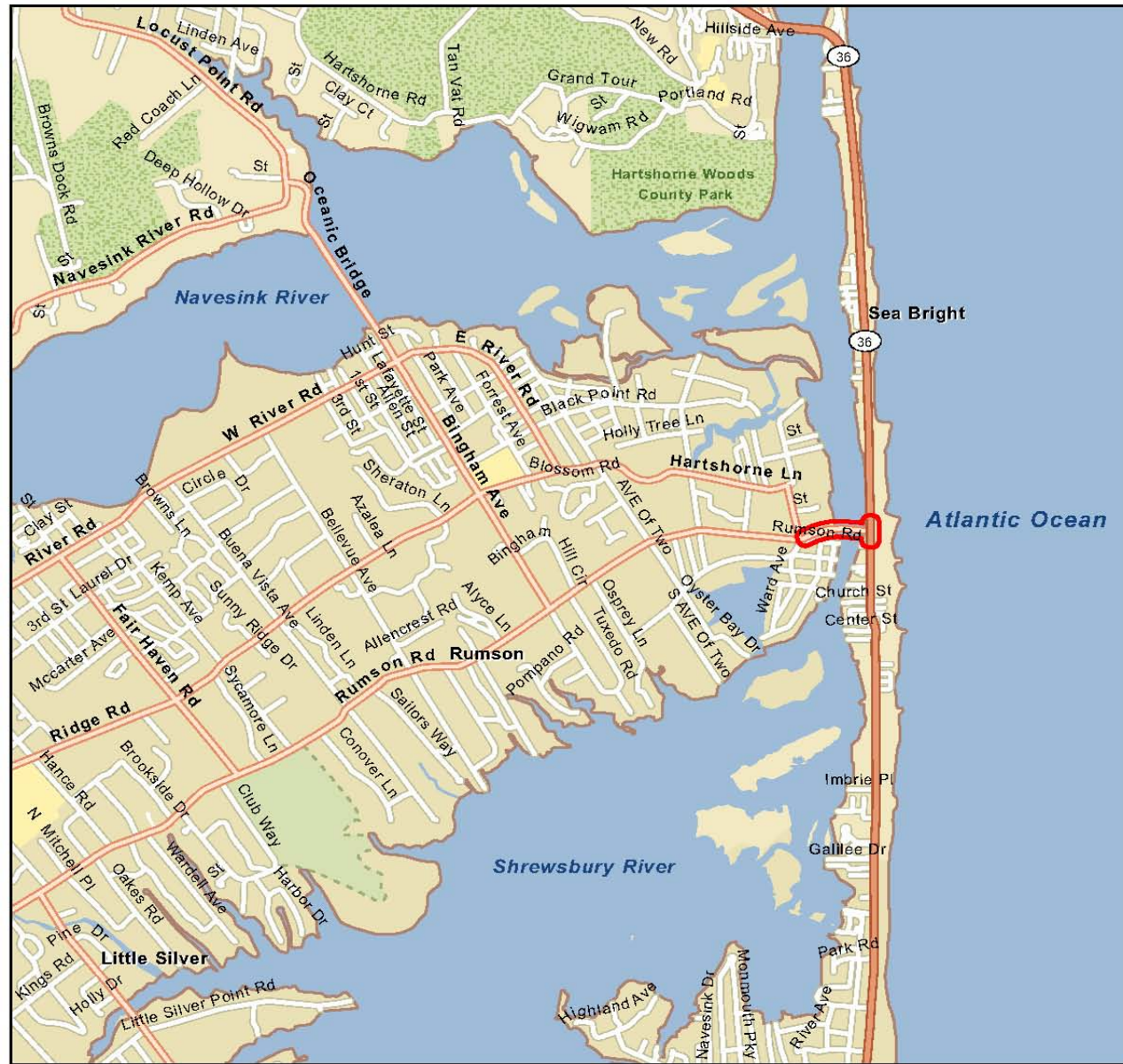
U.S. Department of Transportation  
**Federal Highway  
Administration**



# Project Site Location Map



U.S. Department of Transportation  
**Federal Highway  
Administration**



# Project Overview & Background

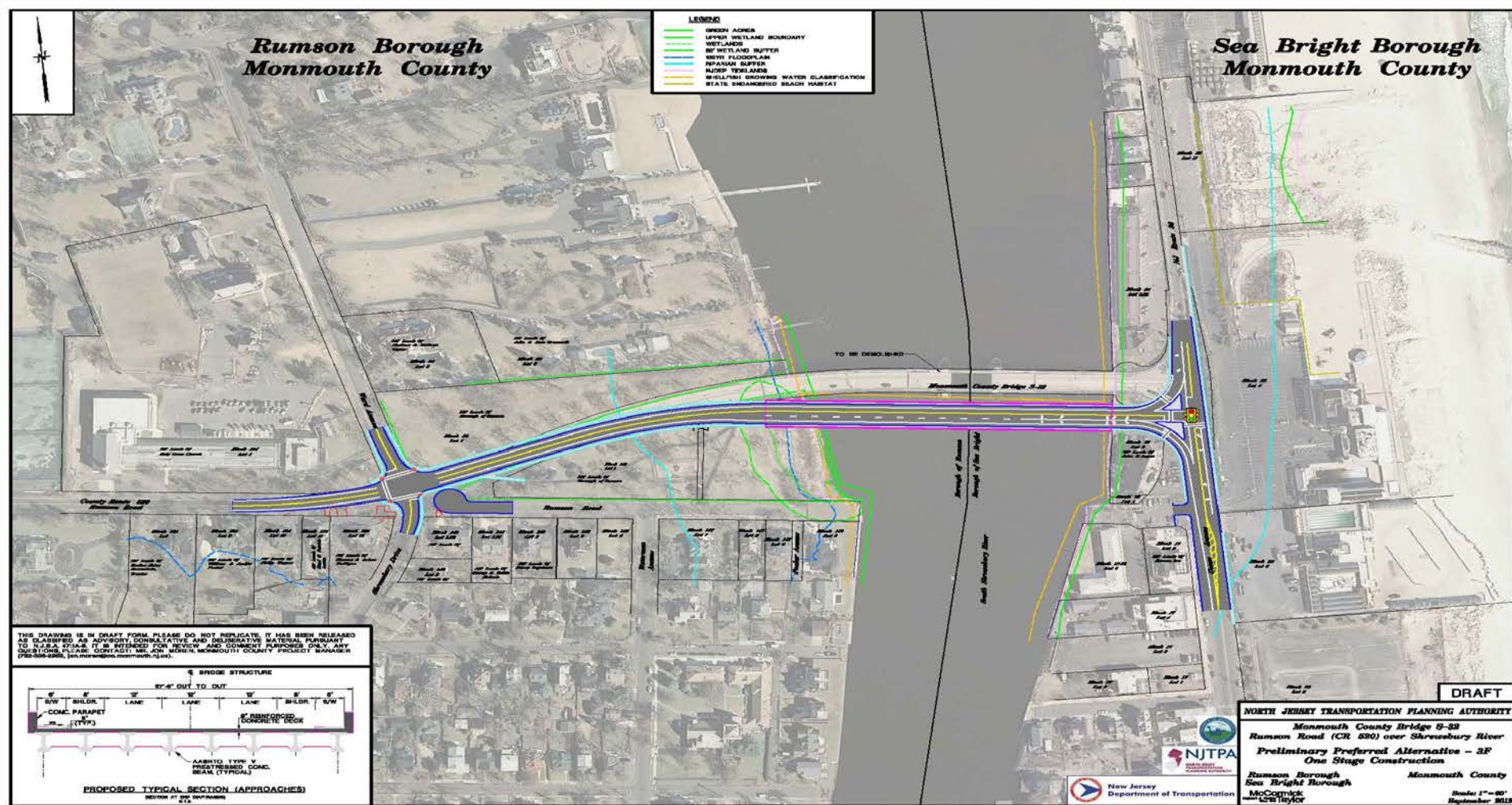
- Bridge Name: Rumson Road (County Route 520) over Shrewsbury River (Rumson-Sea Bright Bridge)
- Serves as one of two emergency evacuation routes for community of Sea Bright in times of flooding and coastal storms
- Year Built: 1950
- Bridge is in overall serious condition and is structurally deficient
- Federal funding being utilized for design and construction of new bridge
- Concept Development Phase completed June 2013



# Local Capital Project Delivery Process

Local Concept Development	Local Preliminary Engineering	Final Design/ Right of Way Acquisition	Construction
Purpose and Need Statement	Approved Design Exception Report	Construction Contract Documents and PS&E package	Complete Construction
Development of Concepts & Alternatives Analyses	Cost Estimates (Final Design, ROW and Construction)	Environmental Reevaluations	Continue Public Outreach
Selection of Preliminary Preferred Alternative	Approved Environmental Document	Secure Environmental Permits	As-Builts
Environmental Screening Report & NEPA Classification	Preliminary Design	Acquisition of ROW	Update and Finalize Design Communications Report
Concept Development Report	Preliminary Engineering Report	Final Utility Relocation Schemes	Close-out Documentation
Initiate Public Outreach & Involvement	Continue Public Outreach & Involvement	Continue Public Outreach & Involvement	

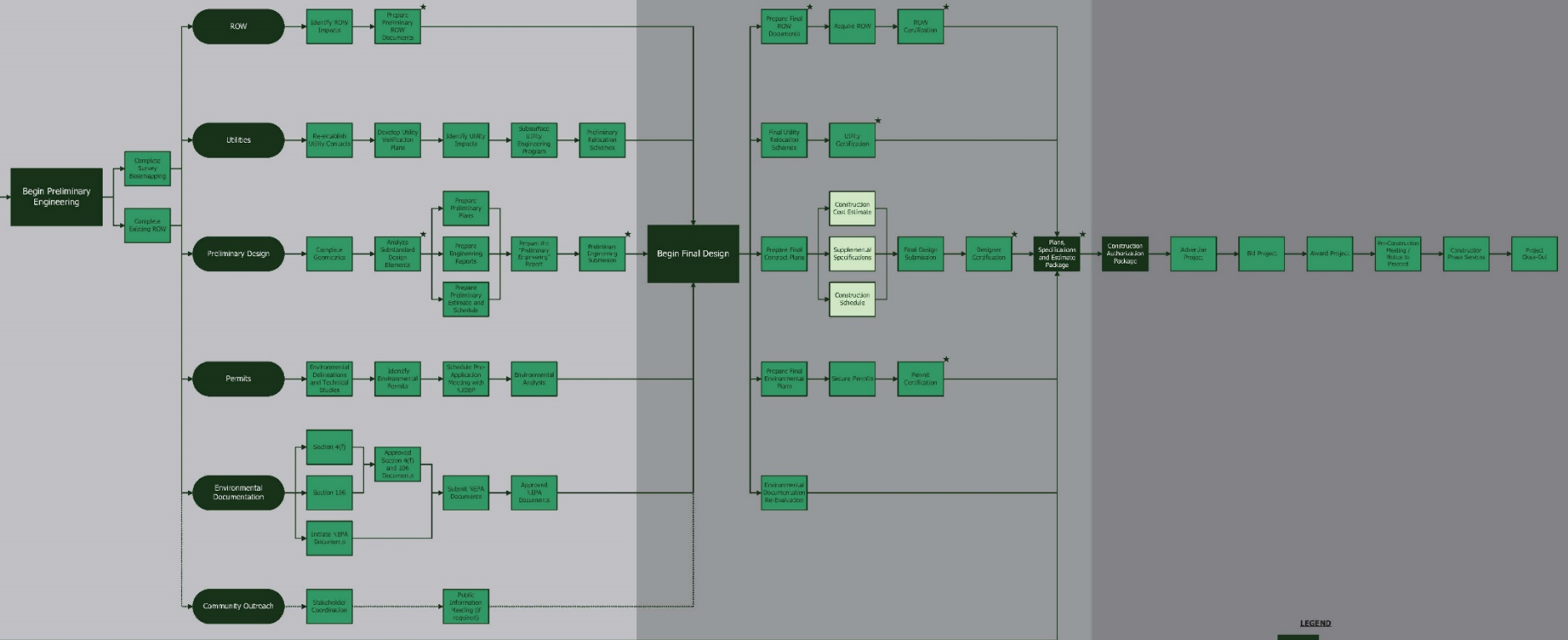
# Local Concept Development Preliminary Preferred Alternative (PPA)



## Preliminary Engineering

## Final Design/ROW

## Construction



# LOCAL PROJECT DELIVERY GUIDE

PAGE 2 OF 2



# Community Involvement – Local Officials Briefings

- November 24, 2014 - Preliminary Engineering Phase Kick-off, Borough of Rumson
- December 4, 2014 - Preliminary Engineering Phase Kick-off, Borough of Sea Bright
- May 5 & 21, 2015 - Elimination of cul-de-sac and proposed improvements at Rumson Rd. & Ocean Ave., Boroughs of Sea Bright (5/5/15) & Rumson (5/21/15)
- October 29, 2015 - Improvements to Ward Ave. & Rumson Rd. intersection; and Operations and Access Improvements for Rumson Rd. & Ocean Ave., Boroughs of Rumson & Sea Bright



# Community Involvement – Stakeholder Meetings

- January 13, 2015 – Preliminary Engineering Phase Kick-off
- May 21, 2015 - Clergy Representatives – for project information & improvements at Rumson Road & Ward Avenue Intersection
- May 21, 2015 - Focus Group - for elimination of cul-de-sac and proposed improvements at Rumson Road & Ward Avenue Intersection
- June 22, 2015 – Follow-up Focus Group Field Meeting - for elimination of cul-de-sac and proposed improvements at Rumson Road & Ward Avenue Intersection
- April 8, 2016 - Community Stakeholders - Elimination of cul-de-sac and new proposed improvements at Rumson Road & Ward Avenue intersection, proposed walkway connection for West Park, & Operations and Access Improvements for Rumson Road & Ocean Avenue



# Community Involvement – Public Information Center

## June 8, 2016 - Public Information Center Meetings (Boroughs of Rumson & Sea Bright)

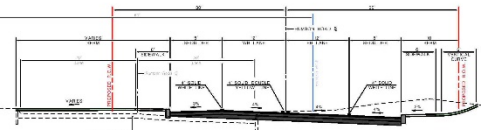
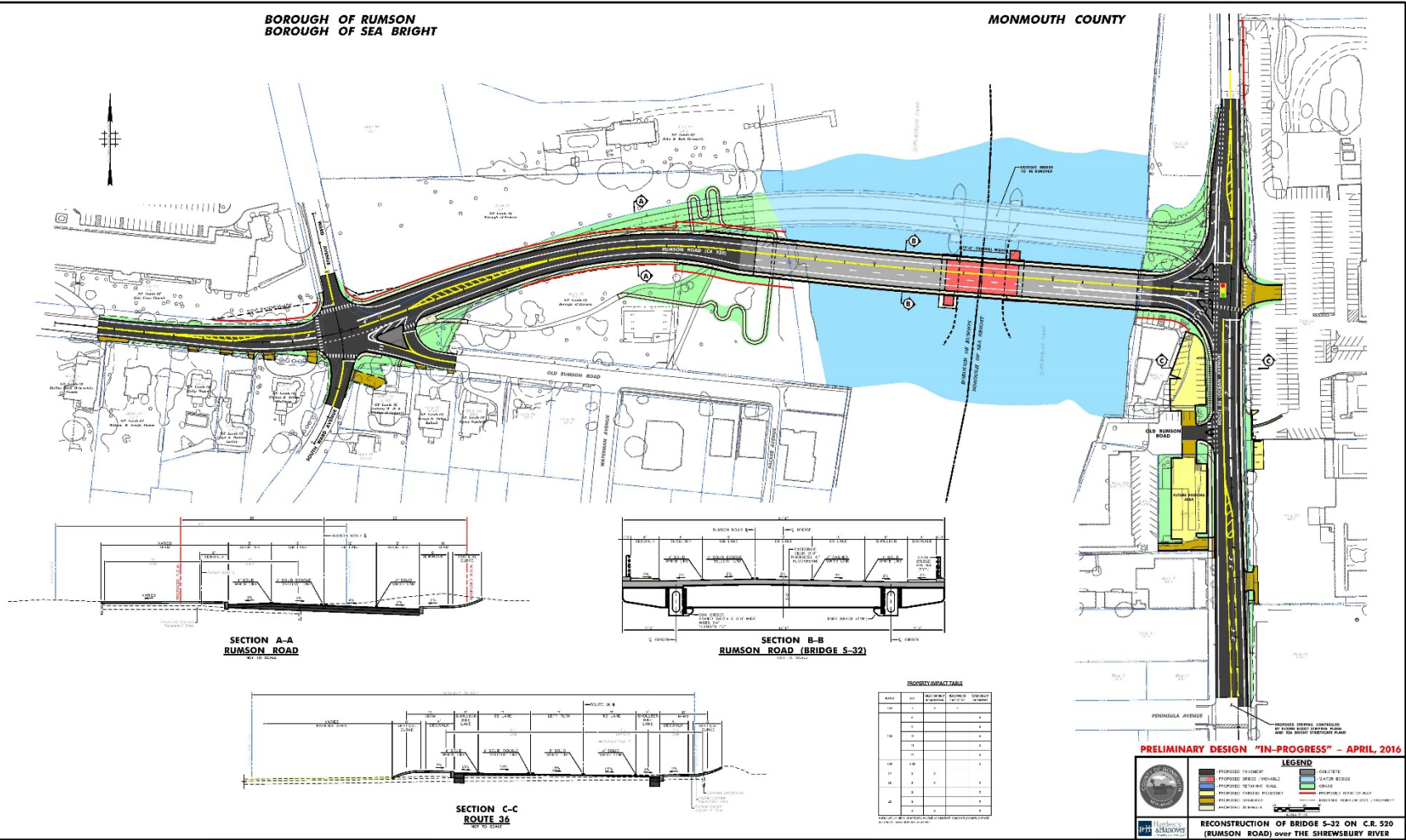
- Elimination of cul-de-sac and new proposed improvements at Rumson Road & Ward Avenue intersection
- Operations and Access Improvements for Rumson Road & Ocean Avenue
- Walkway Connection for West Park
- Cultural Resources Studies & Archeology Results in West Park

# Additional Coordination

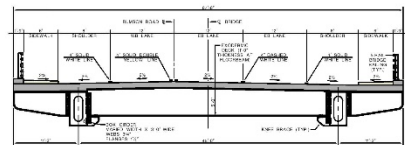
- Ocean Avenue Sea Bright Streetscape Project – Sea Bright Borough (Construction TBD)
- Route 36 (Ocean Avenue) Resurfacing & Restriping – NJDOT (Construction TBD)
- New utility river crossings in project vicinity –New Jersey American Water & New Jersey Natural Gas (Schedule TBD)
- U.S. Coast Guard – request for amendment to (Code of Federal Regulations (CFR) for bridge openings in summer months (Schedule TBD)
- Meetings with County and property owners directly impacted by the project (March & April, 2016)

BOROUGH OF RUMSON  
BOROUGH OF SEA BRIGHT

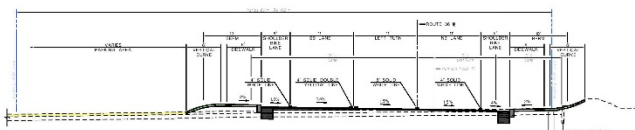
MONMOUTH COUNTY



SECTION A-A  
RUMSON ROAD



SECTION B-B  
RUMSON ROAD (BRIDGE S-32)



SECTION C-C  
ROUTE 36

PROPERTY CONTACT TABLE

NO.	OWNER	PROPERTY ADDRESS	PROPERTY TYPE
1	MONMOUTH COUNTY	1000 ROUTE 36	STATE
2	MONMOUTH COUNTY	1000 ROUTE 36	STATE
3	MONMOUTH COUNTY	1000 ROUTE 36	STATE
4	MONMOUTH COUNTY	1000 ROUTE 36	STATE
5	MONMOUTH COUNTY	1000 ROUTE 36	STATE
6	MONMOUTH COUNTY	1000 ROUTE 36	STATE
7	MONMOUTH COUNTY	1000 ROUTE 36	STATE
8	MONMOUTH COUNTY	1000 ROUTE 36	STATE
9	MONMOUTH COUNTY	1000 ROUTE 36	STATE
10	MONMOUTH COUNTY	1000 ROUTE 36	STATE
11	MONMOUTH COUNTY	1000 ROUTE 36	STATE
12	MONMOUTH COUNTY	1000 ROUTE 36	STATE
13	MONMOUTH COUNTY	1000 ROUTE 36	STATE
14	MONMOUTH COUNTY	1000 ROUTE 36	STATE
15	MONMOUTH COUNTY	1000 ROUTE 36	STATE
16	MONMOUTH COUNTY	1000 ROUTE 36	STATE
17	MONMOUTH COUNTY	1000 ROUTE 36	STATE
18	MONMOUTH COUNTY	1000 ROUTE 36	STATE
19	MONMOUTH COUNTY	1000 ROUTE 36	STATE
20	MONMOUTH COUNTY	1000 ROUTE 36	STATE
21	MONMOUTH COUNTY	1000 ROUTE 36	STATE
22	MONMOUTH COUNTY	1000 ROUTE 36	STATE
23	MONMOUTH COUNTY	1000 ROUTE 36	STATE
24	MONMOUTH COUNTY	1000 ROUTE 36	STATE
25	MONMOUTH COUNTY	1000 ROUTE 36	STATE
26	MONMOUTH COUNTY	1000 ROUTE 36	STATE
27	MONMOUTH COUNTY	1000 ROUTE 36	STATE
28	MONMOUTH COUNTY	1000 ROUTE 36	STATE
29	MONMOUTH COUNTY	1000 ROUTE 36	STATE
30	MONMOUTH COUNTY	1000 ROUTE 36	STATE
31	MONMOUTH COUNTY	1000 ROUTE 36	STATE
32	MONMOUTH COUNTY	1000 ROUTE 36	STATE
33	MONMOUTH COUNTY	1000 ROUTE 36	STATE
34	MONMOUTH COUNTY	1000 ROUTE 36	STATE
35	MONMOUTH COUNTY	1000 ROUTE 36	STATE
36	MONMOUTH COUNTY	1000 ROUTE 36	STATE
37	MONMOUTH COUNTY	1000 ROUTE 36	STATE
38	MONMOUTH COUNTY	1000 ROUTE 36	STATE
39	MONMOUTH COUNTY	1000 ROUTE 36	STATE
40	MONMOUTH COUNTY	1000 ROUTE 36	STATE
41	MONMOUTH COUNTY	1000 ROUTE 36	STATE
42	MONMOUTH COUNTY	1000 ROUTE 36	STATE
43	MONMOUTH COUNTY	1000 ROUTE 36	STATE
44	MONMOUTH COUNTY	1000 ROUTE 36	STATE
45	MONMOUTH COUNTY	1000 ROUTE 36	STATE
46	MONMOUTH COUNTY	1000 ROUTE 36	STATE
47	MONMOUTH COUNTY	1000 ROUTE 36	STATE
48	MONMOUTH COUNTY	1000 ROUTE 36	STATE
49	MONMOUTH COUNTY	1000 ROUTE 36	STATE
50	MONMOUTH COUNTY	1000 ROUTE 36	STATE
51	MONMOUTH COUNTY	1000 ROUTE 36	STATE
52	MONMOUTH COUNTY	1000 ROUTE 36	STATE
53	MONMOUTH COUNTY	1000 ROUTE 36	STATE
54	MONMOUTH COUNTY	1000 ROUTE 36	STATE
55	MONMOUTH COUNTY	1000 ROUTE 36	STATE
56	MONMOUTH COUNTY	1000 ROUTE 36	STATE
57	MONMOUTH COUNTY	1000 ROUTE 36	STATE
58	MONMOUTH COUNTY	1000 ROUTE 36	STATE
59	MONMOUTH COUNTY	1000 ROUTE 36	STATE
60	MONMOUTH COUNTY	1000 ROUTE 36	STATE
61	MONMOUTH COUNTY	1000 ROUTE 36	STATE
62	MONMOUTH COUNTY	1000 ROUTE 36	STATE
63	MONMOUTH COUNTY	1000 ROUTE 36	STATE
64	MONMOUTH COUNTY	1000 ROUTE 36	STATE
65	MONMOUTH COUNTY	1000 ROUTE 36	STATE
66	MONMOUTH COUNTY	1000 ROUTE 36	STATE
67	MONMOUTH COUNTY	1000 ROUTE 36	STATE
68	MONMOUTH COUNTY	1000 ROUTE 36	STATE
69	MONMOUTH COUNTY	1000 ROUTE 36	STATE
70	MONMOUTH COUNTY	1000 ROUTE 36	STATE
71	MONMOUTH COUNTY	1000 ROUTE 36	STATE
72	MONMOUTH COUNTY	1000 ROUTE 36	STATE
73	MONMOUTH COUNTY	1000 ROUTE 36	STATE
74	MONMOUTH COUNTY	1000 ROUTE 36	STATE
75	MONMOUTH COUNTY	1000 ROUTE 36	STATE
76	MONMOUTH COUNTY	1000 ROUTE 36	STATE
77	MONMOUTH COUNTY	1000 ROUTE 36	STATE
78	MONMOUTH COUNTY	1000 ROUTE 36	STATE
79	MONMOUTH COUNTY	1000 ROUTE 36	STATE
80	MONMOUTH COUNTY	1000 ROUTE 36	STATE
81	MONMOUTH COUNTY	1000 ROUTE 36	STATE
82	MONMOUTH COUNTY	1000 ROUTE 36	STATE
83	MONMOUTH COUNTY	1000 ROUTE 36	STATE
84	MONMOUTH COUNTY	1000 ROUTE 36	STATE
85	MONMOUTH COUNTY	1000 ROUTE 36	STATE
86	MONMOUTH COUNTY	1000 ROUTE 36	STATE
87	MONMOUTH COUNTY	1000 ROUTE 36	STATE
88	MONMOUTH COUNTY	1000 ROUTE 36	STATE
89	MONMOUTH COUNTY	1000 ROUTE 36	STATE
90	MONMOUTH COUNTY	1000 ROUTE 36	STATE
91	MONMOUTH COUNTY	1000 ROUTE 36	STATE
92	MONMOUTH COUNTY	1000 ROUTE 36	STATE
93	MONMOUTH COUNTY	1000 ROUTE 36	STATE
94	MONMOUTH COUNTY	1000 ROUTE 36	STATE
95	MONMOUTH COUNTY	1000 ROUTE 36	STATE
96	MONMOUTH COUNTY	1000 ROUTE 36	STATE
97	MONMOUTH COUNTY	1000 ROUTE 36	STATE
98	MONMOUTH COUNTY	1000 ROUTE 36	STATE
99	MONMOUTH COUNTY	1000 ROUTE 36	STATE
100	MONMOUTH COUNTY	1000 ROUTE 36	STATE

**PRELIMINARY DESIGN "IN-PROGRESS" - APRIL, 2016**

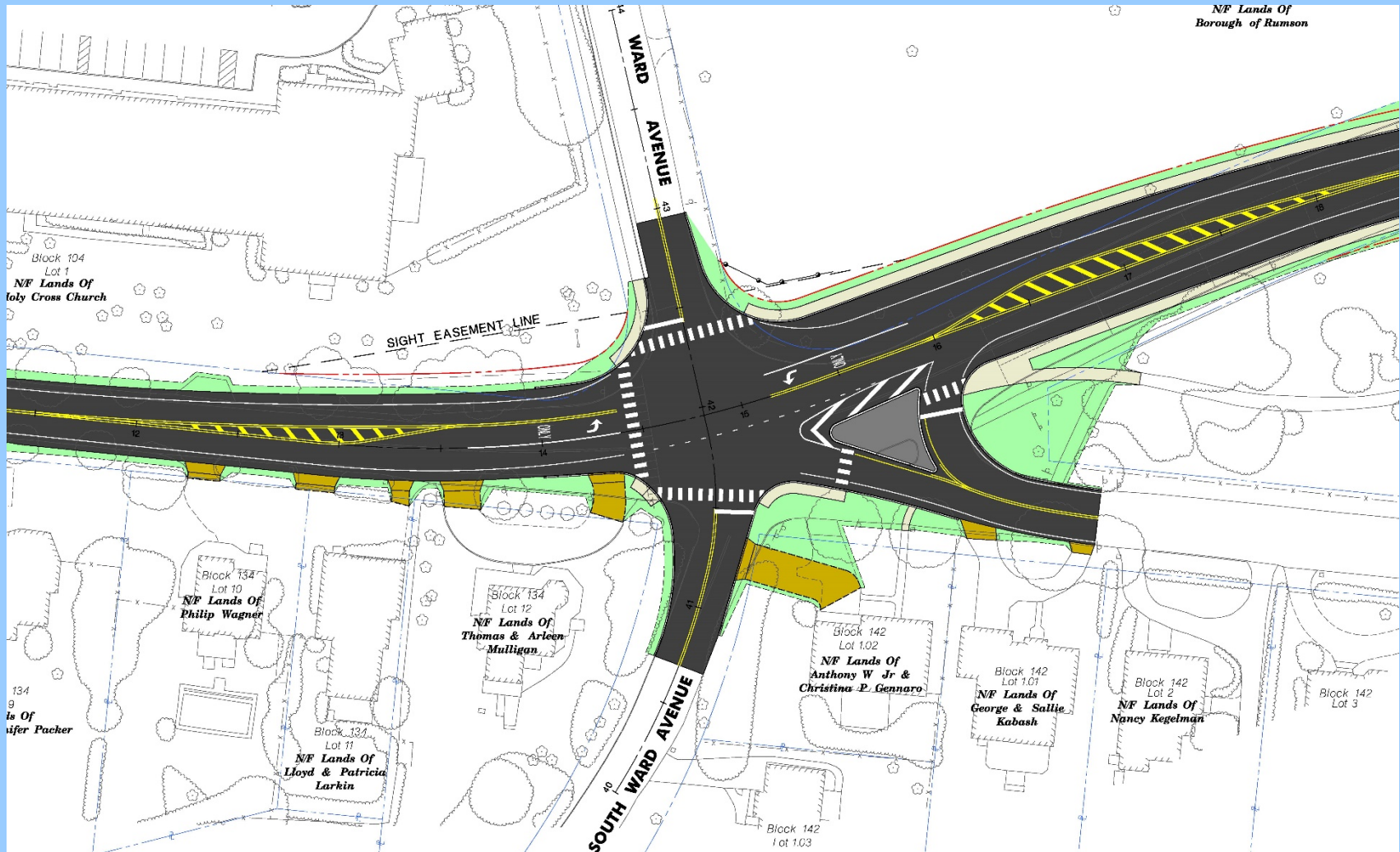
RECONSTRUCTION OF BRIDGE S-32 ON C.R. 520 (RUMSON ROAD) OVER THE SHREWSBURY RIVER

**LEGEND**

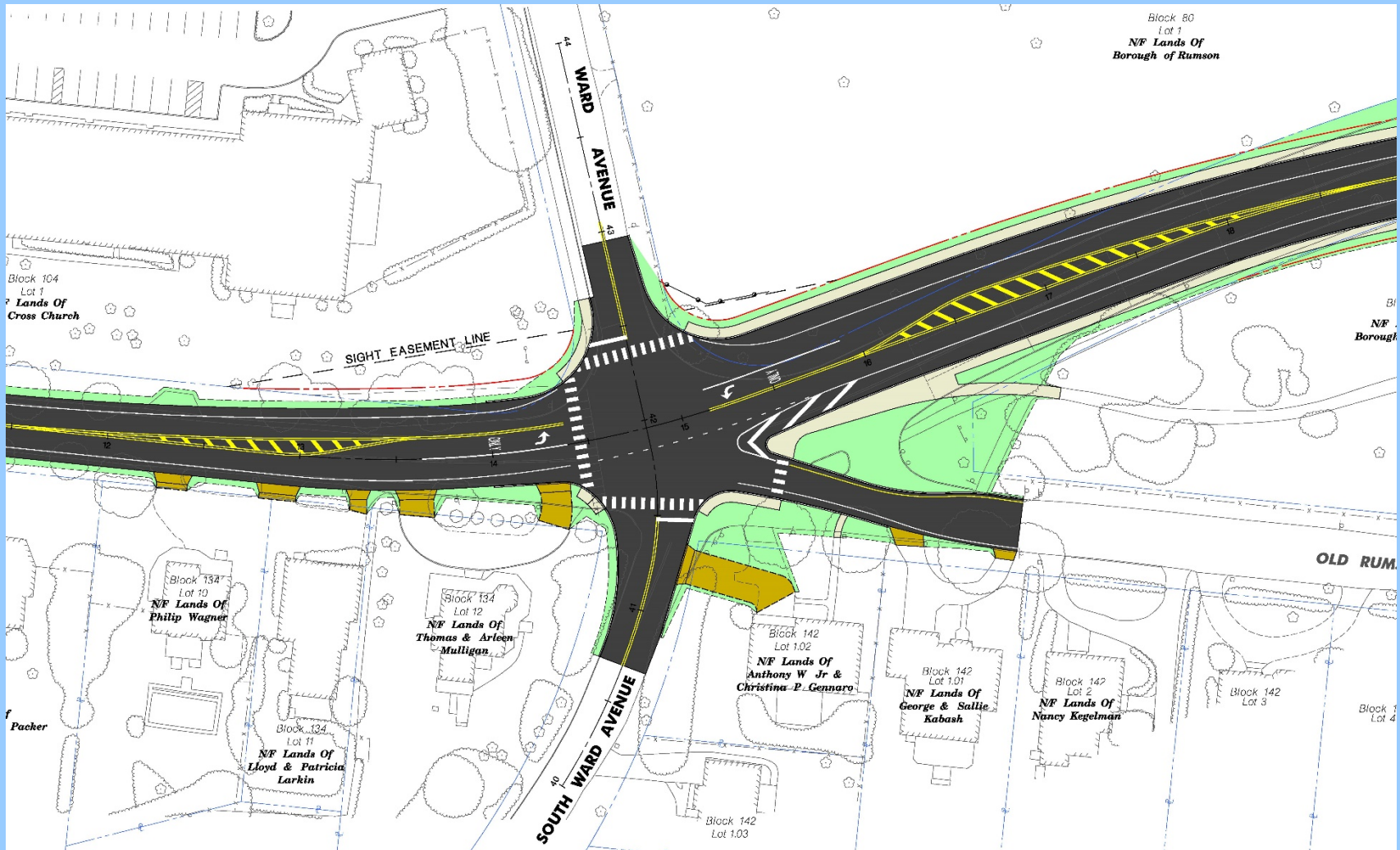
- PROPOSED FUTURE
- PROPOSED BRIDGE
- PROPOSED RETAINING WALL
- PROPOSED FUTURE ROADWAY
- PROPOSED FUTURE SIDEWALK
- PROPOSED FUTURE LANDSCAPE
- PROPOSED FUTURE UTILITIES
- PROPOSED FUTURE LIGHTING
- PROPOSED FUTURE SIGNAGE
- PROPOSED FUTURE FENCE
- PROPOSED FUTURE BARRIER
- PROPOSED FUTURE CURB
- PROPOSED FUTURE GUTTER
- PROPOSED FUTURE DRAINAGE
- PROPOSED FUTURE EROSION CONTROL
- PROPOSED FUTURE RETENTION WALL
- PROPOSED FUTURE PAVEMENT
- PROPOSED FUTURE GRADE
- PROPOSED FUTURE ELEVATION
- PROPOSED FUTURE DISTANCE
- PROPOSED FUTURE BEARING
- PROPOSED FUTURE STRENGTH
- PROPOSED FUTURE DURABILITY
- PROPOSED FUTURE SAFETY
- PROPOSED FUTURE COMFORT
- PROPOSED FUTURE CONVENIENCE
- PROPOSED FUTURE ECONOMY
- PROPOSED FUTURE ENVIRONMENTAL
- PROPOSED FUTURE SOCIAL
- PROPOSED FUTURE CULTURAL
- PROPOSED FUTURE HISTORICAL
- PROPOSED FUTURE AESTHETIC
- PROPOSED FUTURE FUNCTIONAL
- PROPOSED FUTURE OPERATIONAL
- PROPOSED FUTURE MAINTENANCE
- PROPOSED FUTURE REPAIR
- PROPOSED FUTURE REPLACEMENT
- PROPOSED FUTURE DEMOLITION
- PROPOSED FUTURE CONSTRUCTION
- PROPOSED FUTURE OPERATION
- PROPOSED FUTURE CLOSURE
- PROPOSED FUTURE DIVERSION
- PROPOSED FUTURE REROUTING
- PROPOSED FUTURE TRAFFIC
- PROPOSED FUTURE VOLUME
- PROPOSED FUTURE SPEED
- PROPOSED FUTURE ACCIDENT
- PROPOSED FUTURE INJURY
- PROPOSED FUTURE DEATH
- PROPOSED FUTURE PROPERTY
- PROPOSED FUTURE DAMAGE
- PROPOSED FUTURE LOSS
- PROPOSED FUTURE COST
- PROPOSED FUTURE BUDGET
- PROPOSED FUTURE FUNDING
- PROPOSED FUTURE REVENUE
- PROPOSED FUTURE EXPENSE
- PROPOSED FUTURE PROFIT
- PROPOSED FUTURE LOSS
- PROPOSED FUTURE EQUITY
- PROPOSED FUTURE DEBT
- PROPOSED FUTURE CREDIT
- PROPOSED FUTURE RATING
- PROPOSED FUTURE GRADE
- PROPOSED FUTURE ELEVATION
- PROPOSED FUTURE DISTANCE
- PROPOSED FUTURE BEARING
- PROPOSED FUTURE STRENGTH
- PROPOSED FUTURE DURABILITY
- PROPOSED FUTURE SAFETY
- PROPOSED FUTURE COMFORT
- PROPOSED FUTURE CONVENIENCE
- PROPOSED FUTURE ECONOMY
- PROPOSED FUTURE ENVIRONMENTAL
- PROPOSED FUTURE SOCIAL
- PROPOSED FUTURE CULTURAL
- PROPOSED FUTURE HISTORICAL
- PROPOSED FUTURE AESTHETIC
- PROPOSED FUTURE FUNCTIONAL
- PROPOSED FUTURE OPERATIONAL
- PROPOSED FUTURE MAINTENANCE
- PROPOSED FUTURE REPAIR
- PROPOSED FUTURE REPLACEMENT
- PROPOSED FUTURE DEMOLITION
- PROPOSED FUTURE CONSTRUCTION
- PROPOSED FUTURE OPERATION
- PROPOSED FUTURE CLOSURE
- PROPOSED FUTURE DIVERSION
- PROPOSED FUTURE REROUTING
- PROPOSED FUTURE TRAFFIC
- PROPOSED FUTURE VOLUME
- PROPOSED FUTURE SPEED
- PROPOSED FUTURE ACCIDENT
- PROPOSED FUTURE INJURY
- PROPOSED FUTURE DEATH
- PROPOSED FUTURE PROPERTY
- PROPOSED FUTURE DAMAGE
- PROPOSED FUTURE LOSS
- PROPOSED FUTURE COST
- PROPOSED FUTURE BUDGET
- PROPOSED FUTURE FUNDING
- PROPOSED FUTURE REVENUE
- PROPOSED FUTURE EXPENSE
- PROPOSED FUTURE PROFIT
- PROPOSED FUTURE LOSS
- PROPOSED FUTURE EQUITY
- PROPOSED FUTURE DEBT
- PROPOSED FUTURE CREDIT
- PROPOSED FUTURE RATING



# Improvements at Rumson Road & Ward Avenue

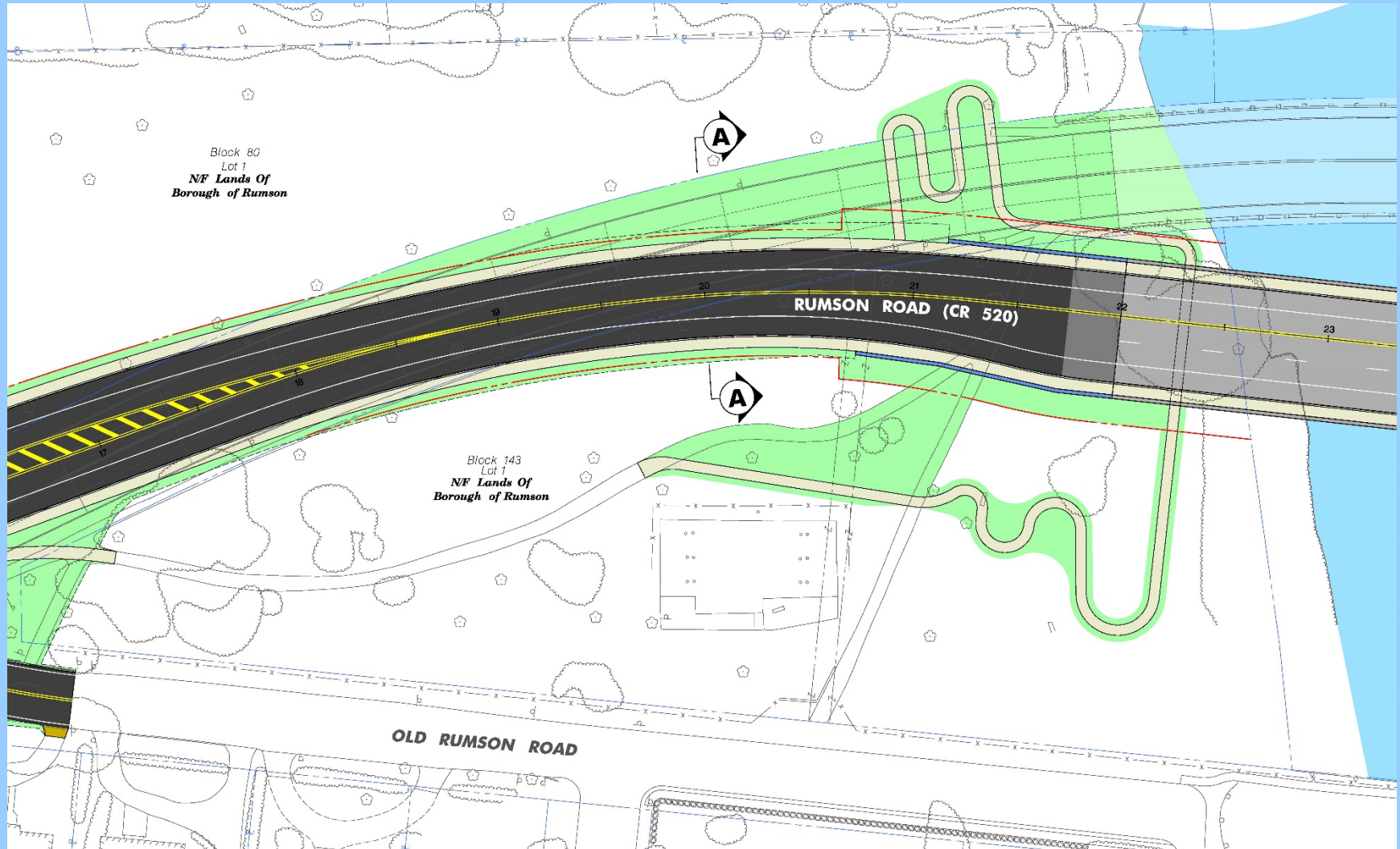


# Improvements at Rumson Road & Ward Avenue (Alternative 2)





# Walkway Connection for West Park

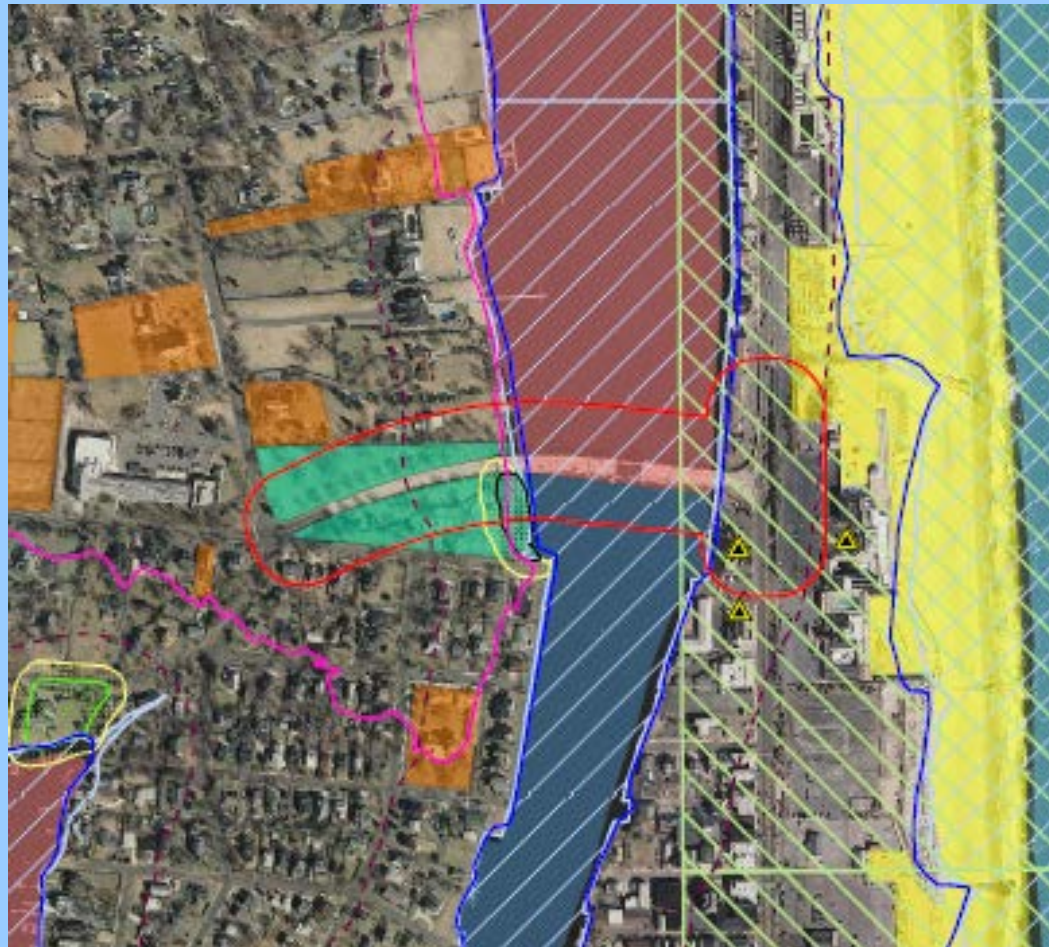




# Route 36 & Rumson Road Operation & Access Improvements



# Environmental Constraints

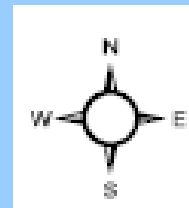


## Legend

- |                             |   |
|-----------------------------|---|
| Bridge Study Area           | State Endangered (Rank 4) Beach Habitat |
| Unmapped Coastal Wetland    | Green Acres Parcel                      |
| NJDEP Freshwater Wetland    | Historic Properties                     |
| Wetland Transition Area     | Shellfish Classification:               |
| Riparian Zone Boundary      | Prohibited                              |
| 100-year FEMA Floodplain    | Seasonal (Nov - Apr)                    |
| Upper Wetland Boundary      | Special Restricted                      |
| NJDEP Tidelands             | Known Contaminated Site                 |
| Natural Heritage Plant Grid |   |

### Sources:

Unmapped Coastal Wetland from Amy S. Greene Environmental Consultants Inc. based on fieldwork, December 2011. This (map/publication/report) was developed using New Jersey Department of Environmental Protection Geographic Information System digital data, but this secondary product has not been verified by NJDEP and is not State-authorized. New Jersey 2007-2008 High Resolution Orthophotography - JPEG2000 5K Tiles, State of New Jersey - Office of Information Technology (NJ/OIT), Office of Geographic Information Systems (OGIS), Trenton, NJ, October 2008. Floodplain Boundary extracted from National Flood Hazard Layer, compilation of Digital Flood Insurance Rate Map databases published by Federal Emergency Management Agency (FEMA), distributed by FEMA Map Service Center, February 2010.



# Environmental Documentation

- Programmatic Section 4f (parkland)
- Section 106 (Cultural Resources)
- Complete NEPA Document (Categorical Exclusions Documentation)



# Permits

Agency	Approval
Freehold Soil Conservation District	Soil Erosion & Sediment Control Plan Certification
NJ State Historic Preservation Office	Memorandum of Agreement
NJDEP	Letter of Interpretation
NJDEP	Freshwater Wetlands Permit
NJDEP	Water Quality Certificate
NJDEP	Flood Hazard Area Permit
NJDEP	Storm Water Management Plan Approval
NJDEP	CAFRA, Waterfront Development
U.S. Army Corps of Engineers	Individual or Nationwide Permit
US Coast Guard, Bridge Administration Division	Coast Guard Bridge Permit

# Cultural Resources Studies & Archaeology Results in West Park

- Cultural Resources Investigation performed under Section 106 of the National Historic Preservation Act



# Cultural Resources Studies & Archaeology Results in West Park

- Phase I/II Archaeological Survey
- Intensive-level Historic Architectural Survey
- Two archaeological sites identified in West Park
- Historic Properties include Bridge S-32
- Adverse Effects on historic properties resolved through development of a Memorandum of Agreement and implementation of mitigation measures
- Coordination with NJDOT, FHWA and NJ SHPO



# Project Schedule

- Completion of Preliminary Engineering Phase – Spring 2017
- Final Design Phase & Right of Way Acquisitions – Spring 2017 – Fall 2019
- Construction – Winter 2020 – Spring 2023

# Project Information

- **Monmouth County Web site address:**
    - visitmonmouth.com
    - Click County Road & Bridge Projects (Image of Bridge, 3<sup>rd</sup> box right side on home page)
    - Click “Rumson & Sea Bright – Rumson-Sea Bright Bridge (S-32)”
- Note: This Power Point Presentation will be posted on the Monmouth County website
- Written comments will be received until Friday, July 8, 2016
  - Inkyung Englehart, Monmouth County Project Manager, (732) 431-7760, [engineer@co.monmouth.nj.us](mailto:engineer@co.monmouth.nj.us)