

Monmouth County Bridge S-17

On County Route 10, West Front Street over the Swimming River

In the Township of Middletown and the Borough of Red Bank

Monmouth County, New Jersey

Public Information Center # 6 & 7

April 18, 2012 (Red Bank) 6:30 – 9:30

April 23, 2012 (Middletown) 6:30 – 9:30

Previous Meetings:

Middletown: June 17, 2008

February 27, 2006

June 23, 2004

Red Bank: June 19, 2008

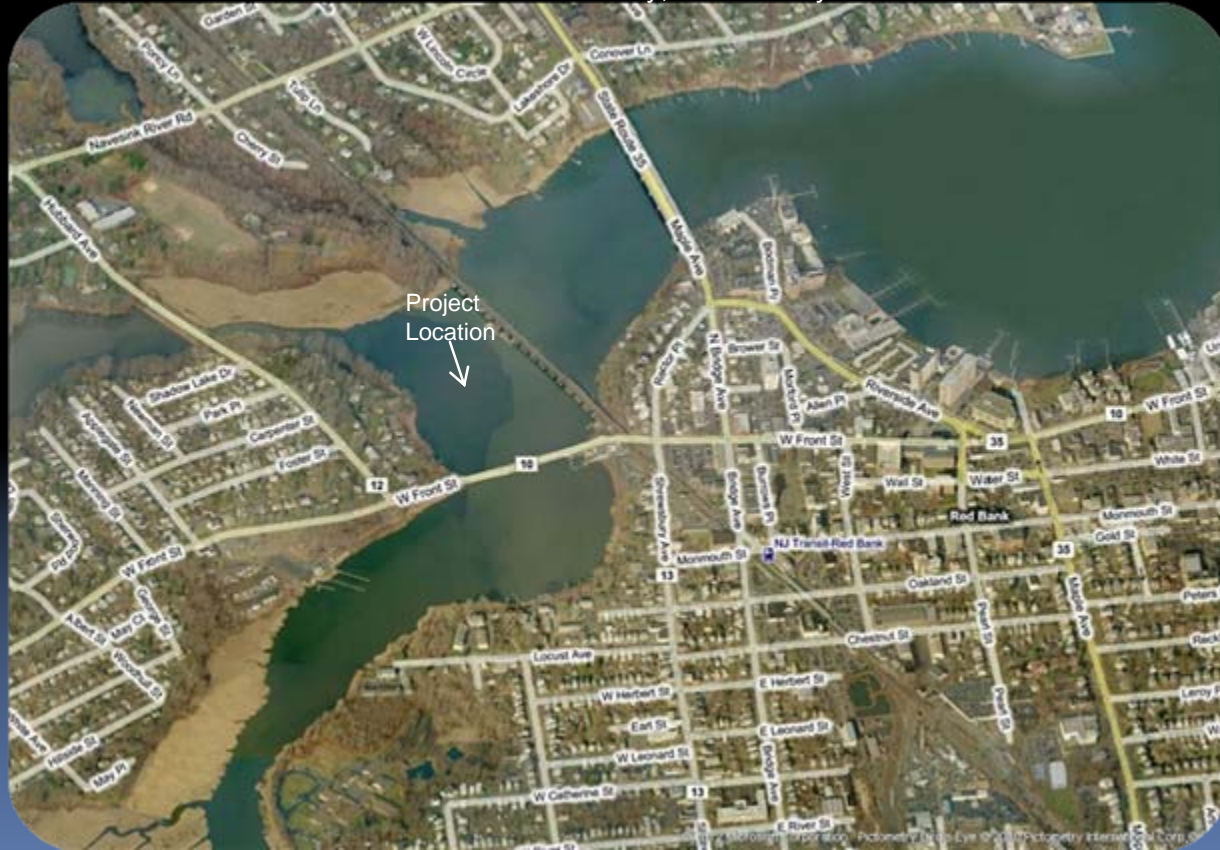
June 29, 2004



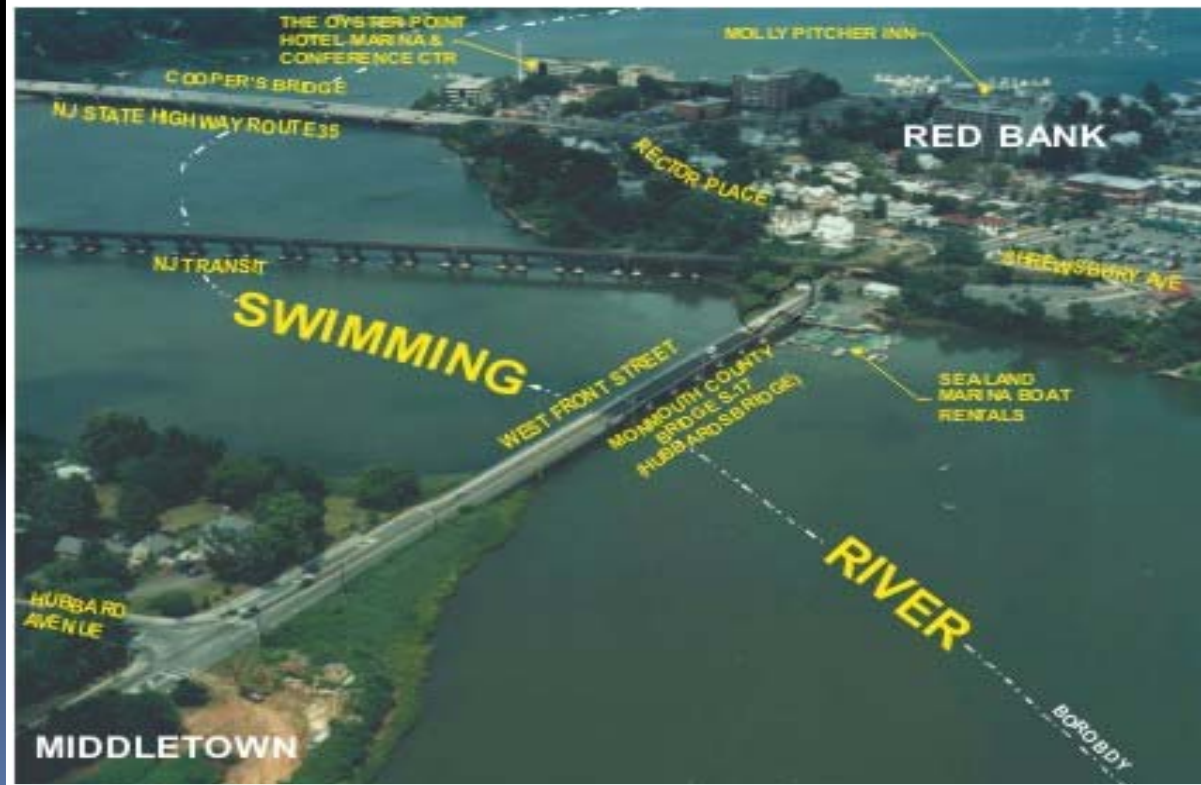
**PARSONS
BRINCKERHOFF**

PROJECT AERIAL

Reconstruction of
Monmouth County Bridge S-17
Township of Middletown & Borough of Red Bank
Monmouth County, New Jersey



PROJECT AERIAL
Reconstruction of
Monmouth County Bridge S-17
Township of Middletown & Borough of Red Bank
Monmouth County, New Jersey



EXISTING
CONDITONS

Local Scoping Project

- Federally Funded
- Administered Through:
 - North Jersey Transportation Planning Authority
 - New Jersey Department of Transportation
- To advance the project through:
 - Preliminary Engineering
 - Existing Conditions
 - Alternatives Analysis
 - National Environmental Policy Act (NEPA)
 - Environmental Investigation

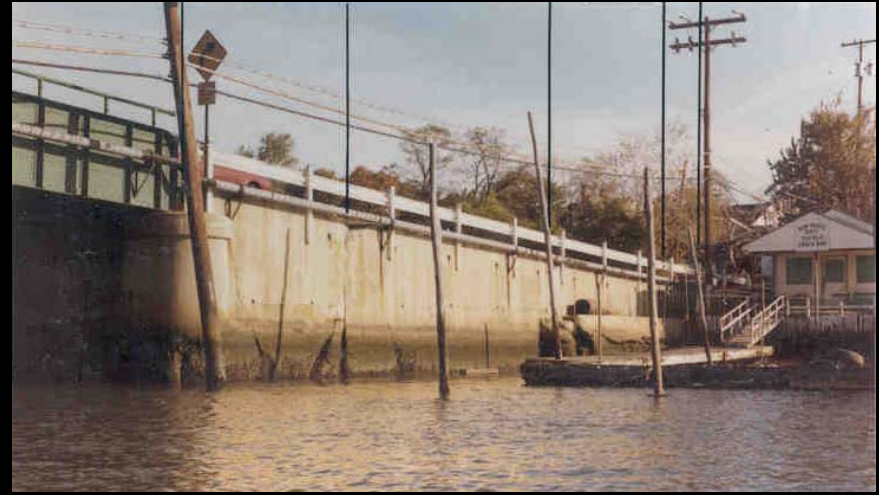
Local Scoping Project

- Local Scoping Final Product:
Initially Preferred Alternative (IPA)
 - Public Comments/Input
 - Local Officials Comments/Input
 - NJDOT and FWHA Approval
 - NEPA Clearance
- Proceed to Final Design

Bridge S-17 History

- Constructed in 1921
- 7 span concrete pile supported piers
- Navigational vertical clearance of 8.4' @ MHW
- Measures 339'-4" from abutment face to abutment face
- 1992 approach replacement work
- 2004 temporary deck replacement (Acrow Panels)
 - Roadway width went from 21.7' to 24'
 - Sufficiency rating of 7 out of 100 prior to 2004 work

Bridge S-17 (prior to 1992 approach replacement):



Bridge S-17 (prior to 2004 superstructure replacement):



Bridge S-17 (2006 Inspection Photos):



PROJECT PHOTOS

Acrow Panel Superstructure

Township of Middletown & Borough of Red Bank
Monmouth County, New Jersey



PROJECT PHOTOS

Vertical Clearance Constraint at Railroad Bridge Overpass (10'-11")

Township of Middletown & Borough of Red Bank
Monmouth County, New Jersey



PROJECT DESIGN

- The project design has advanced the approved Initially Preferred Alternative (IPA).
- The design includes:
 - Realignment of the Bridge (provided in each direction):
 - 12' travel lane
 - 4' shoulder
 - 6' sidewalk
 - Decorative parapet
 - ADA compliant signal improvements at the intersection of West Front Street & Hubbard Avenue (Middletown).
 - ADA compliant signal Improvements at the intersection of West Front Street & Rector Place/Shrewsbury Avenue (Red Bank).
 - ADA compliant pedestrian walkway (8' wide) to connect the south side of the bridge to Shrewsbury Avenue (Red Bank).
 - Drainage improvements.
 - Lighting improvements.

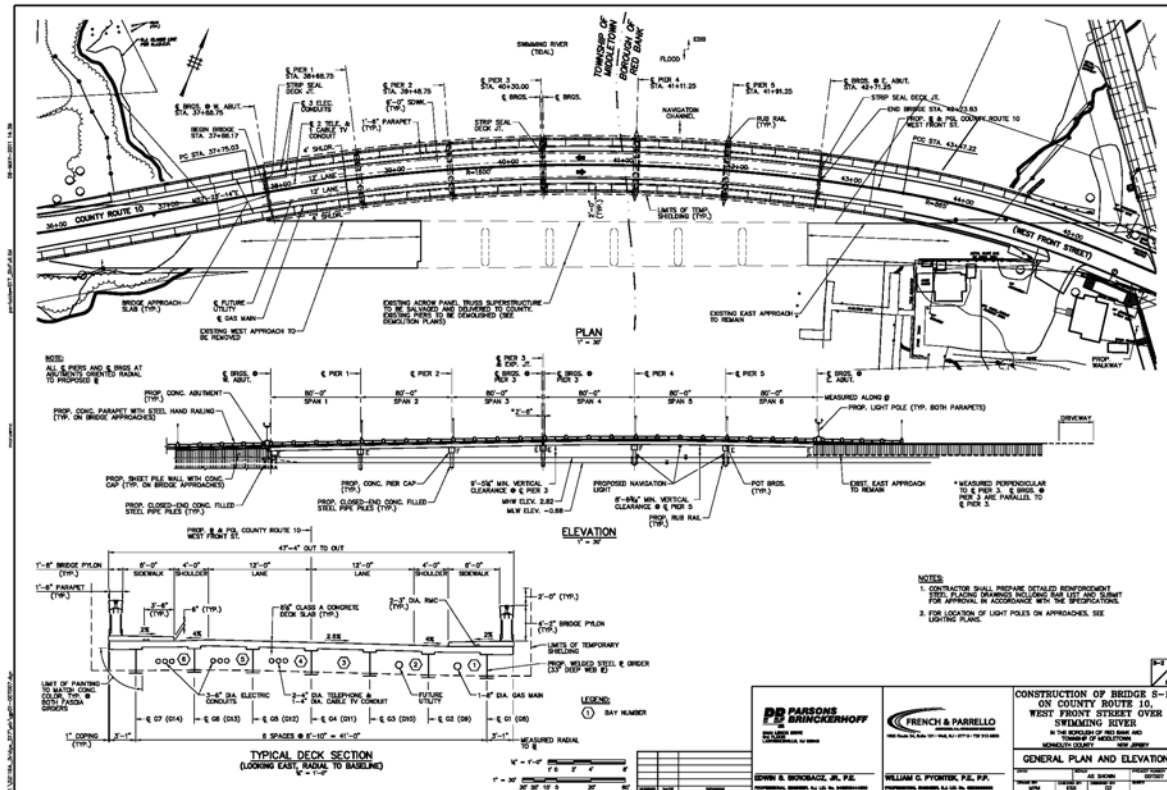
PROJECT DESIGN

Proposed Bridge Alignment

Township of Middletown & Borough of Red Bank
Monmouth County, New Jersey



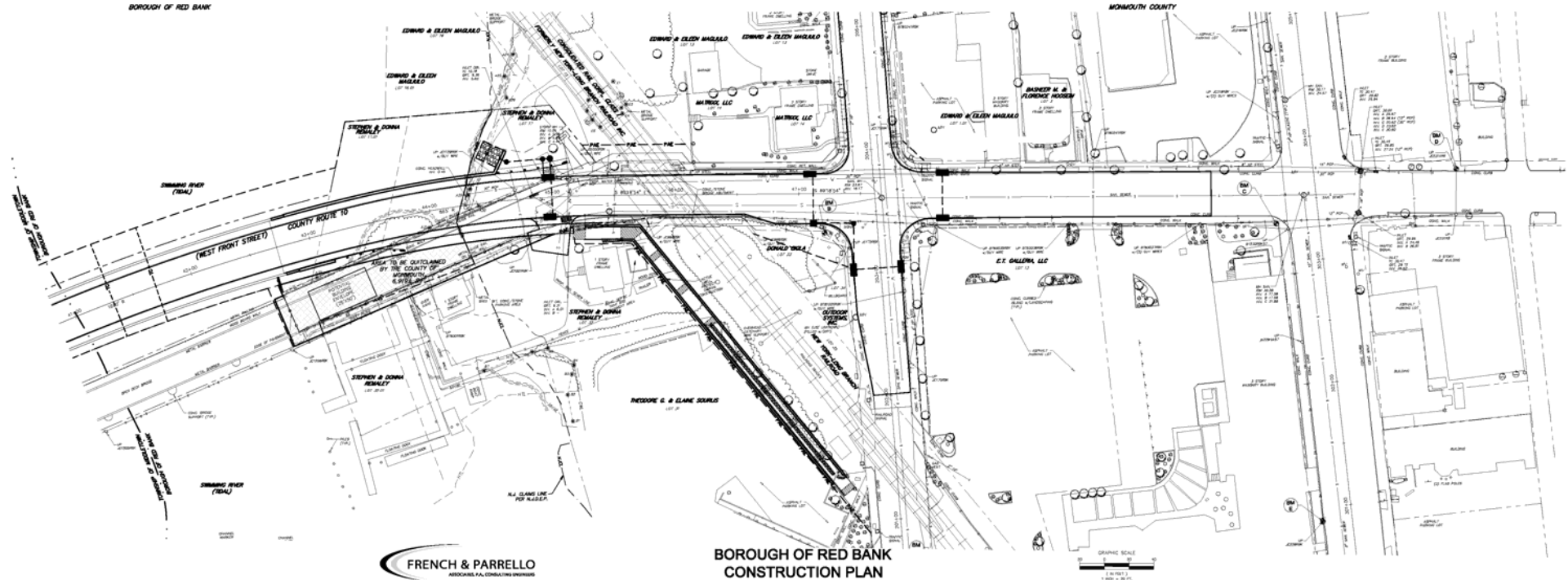
Monmouth County, New Jersey



PROJECT DESIGN

Proposed Bridge Plan

Borough of Red Bank
Monmouth County, New Jersey

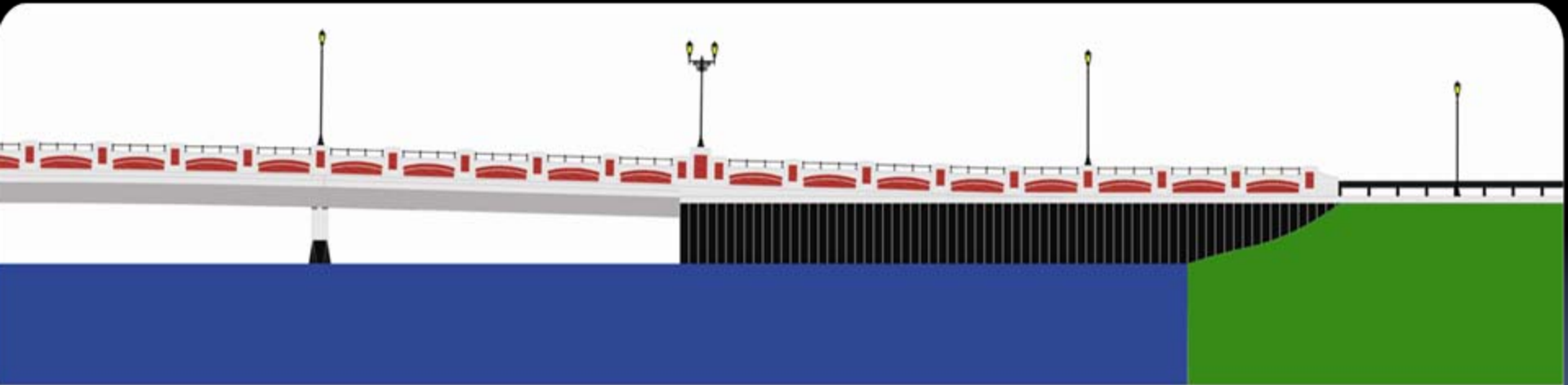


PROJECT DESIGN

Proposed Bridge

(Red Bank)

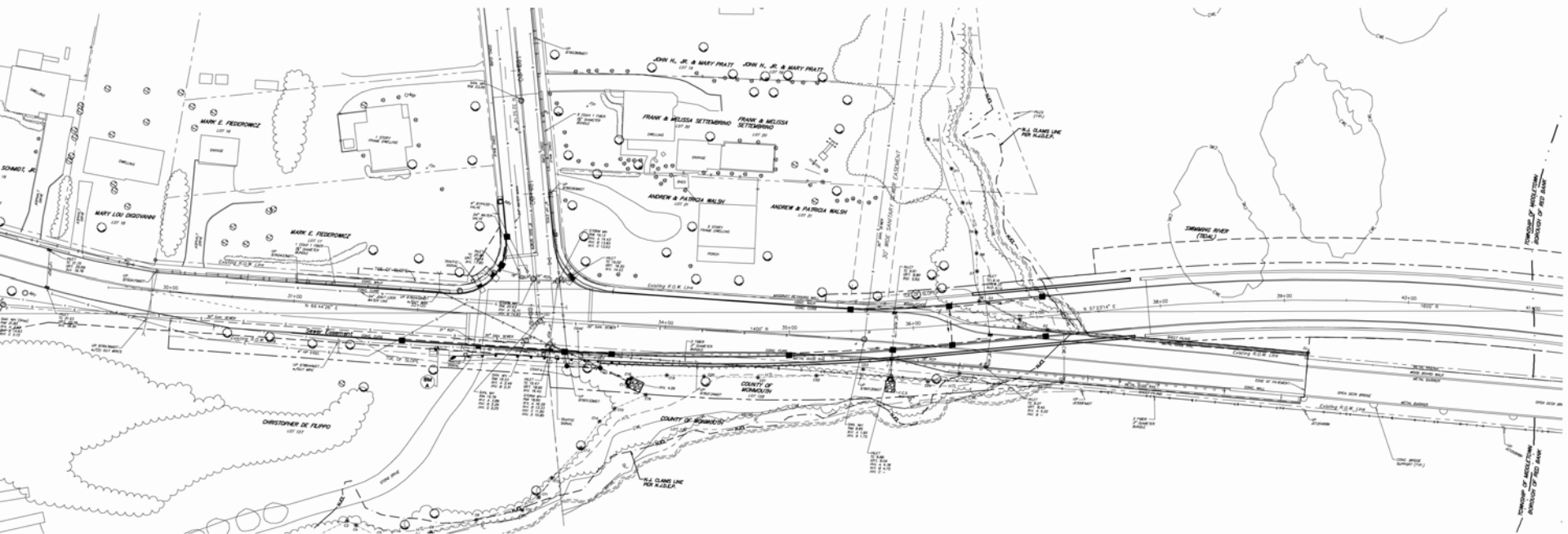
Township of Middletown & Borough of Red Bank
Monmouth County, New Jersey



BOROUGH OF RED BANK
(EXTERIOR VIEW OF BRIDGE LOOKING NORTH)



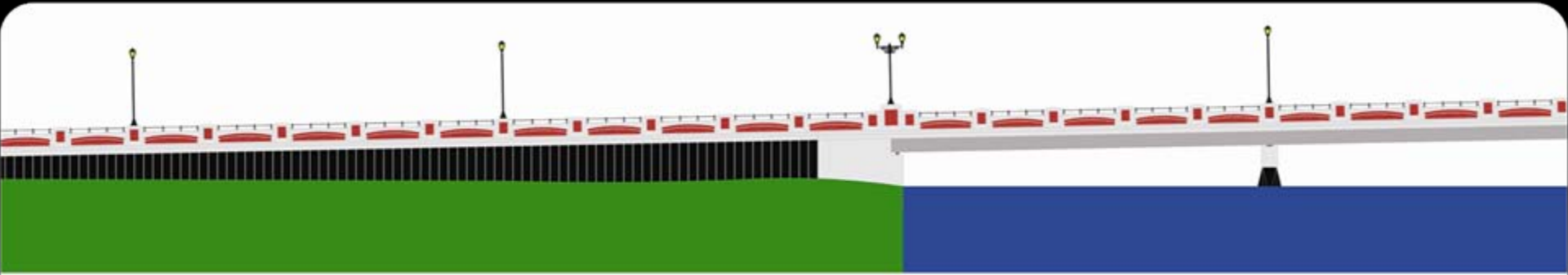
Monmouth County, New Jersey



PROJECT DESIGN

Proposed Bridge (Middletown)

Township of Middletown & Borough of Red Bank
Monmouth County, New Jersey



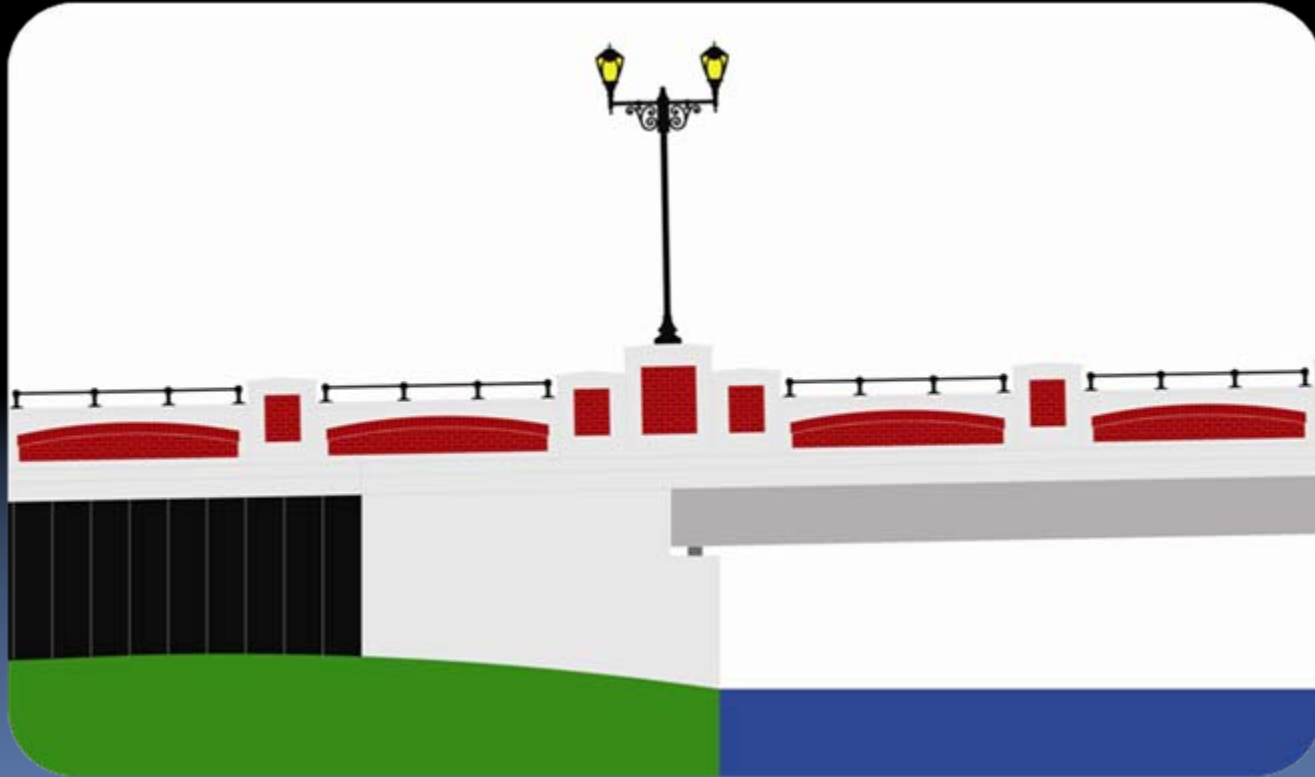
TOWNSHIP OF MIDDLETOWN
(EXTERIOR VIEW OF BRIDGE LOOKING NORTH)



PROJECT DESIGN

Proposed Parapet at Bridge Abutments

Township of Middletown
Monmouth County, New Jersey



PROJECT DESIGN

Photo Rendering

(Looking West)

Township of Middletown & Borough of Red Bank
Monmouth County, New Jersey



Existing Site Condition



Graphics by Parsons Brinckerhoff

Proposed - Photo Location No.2

PROJECT DESIGN

Photo Rendering

(Looking East)

Township of Middletown & Borough of Red Bank
Monmouth County, New Jersey



Graphics by Parsons Brinckerhoff

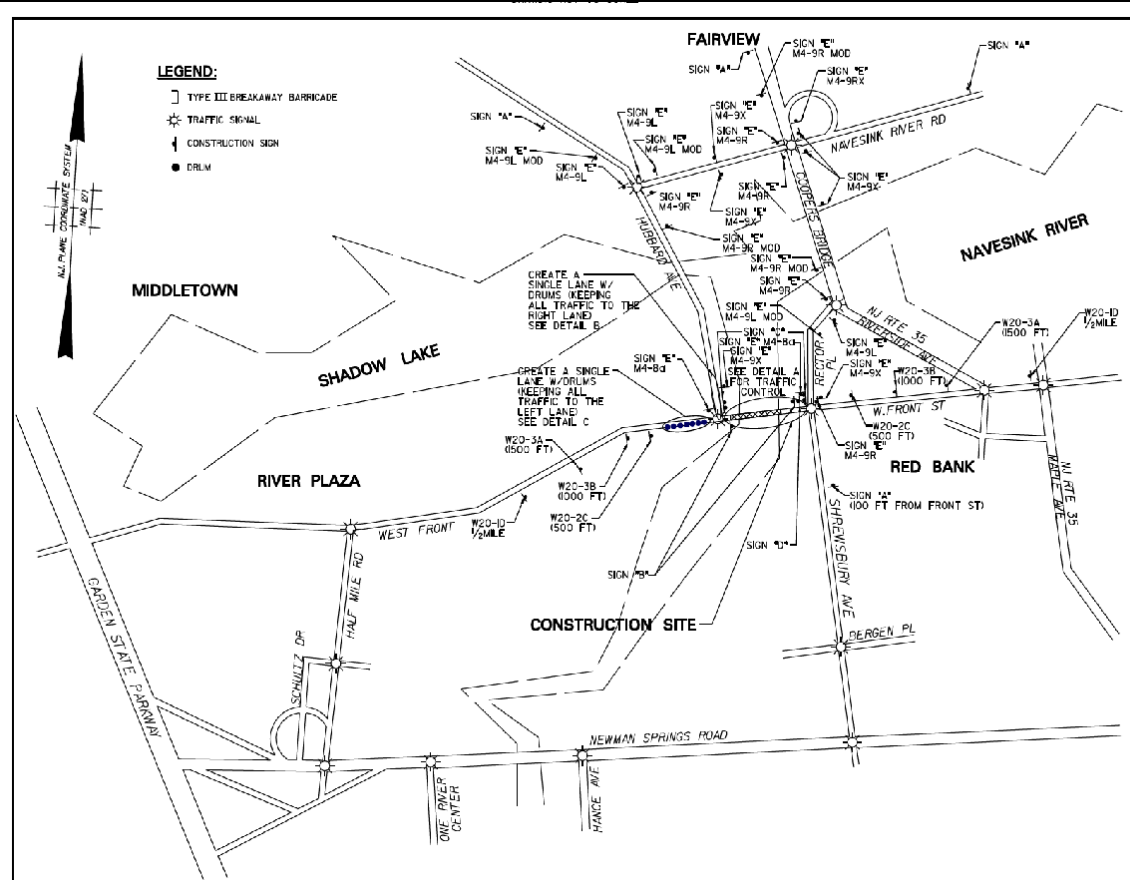
Proposed - Photo Location No.1

Schedule and Cost

- Construction cost anticipated to be \$12.5 million.
- Bridge anticipated to be open to public within 24 months from start of bridge foundation (includes a 4 month closure of traffic on the existing bridge).
- Final Design documents are anticipated to be completed in summer of 2012.
- Construction is anticipated to begin in summer of 2013.

PROJECT DESIGN

Proposed Detour Route



QUESTION & ANSWER PERIOD