



**Monmouth County Park System**  
**Parking and Restroom Building Site Improvements**  
**Hartshorne Woods Park, Rocky Point Area**  
**PROJECT INFORMATION**

---

**PROJECT DESCRIPTION:**

Construction will begin at the end of August to double the size of the existing parking lot, and to provide a year round restroom facility at the Rocky Point Area of Hartshorne Woods Park. Woodward Construction, Matawan, NJ is under contract with MCPS for the work involved. Improvements include enhancements to the Rocky Point Area entrance, concrete walkways, storm-water management, site utilities and landscaping. The project is being phased to minimize closing of parking and disruption of access. However at times visitors may have to find alternate parking locations.

**REASON FOR PROJECT:**

Due to the recently completed restoration to Battery Lewis, complete with exhibits and a sixteen inch barrel, 68' long gun, the Park System prepared for site improvements to better accommodate our visitors. The existing 48 car parking lot is insufficient, and is not in compliance with Americans with Disabilities Act (ADA) standards. The parking lot does not meet current storm water management requirements, and is in poor condition.

**DESIGN APPROACH:**

While all but five major World War II structures have been removed, the site remains large scale, and utilitarian in design and layout. Improvements are needed to transform the site into a welcoming, easily navigable experience, at a smaller, more detailed, human scale.

The design of the restroom building uses form and elements that align with the military history of the site.

The Park System complies with development limitations placed on the site due to it being on the National Register of Historic Places. A State Historic Preservation Office (SHPO) application for development has been approved.

**ENVIRONMENTAL CONSIDERATIONS:**

Permits will be secured for the intended improvements as follows:

- Freehold Soil Conservation District Soil Erosion and Sediment Control Plan (SESC)
- NJDEP RFA for storm water discharge/Storm water Management Plan

Vegetation of value (mature, native trees) has been documented and will be protected during construction by installing fencing around the canopy drip line of the trees, and by not disturbing the ground in any way within the canopy of the tree.

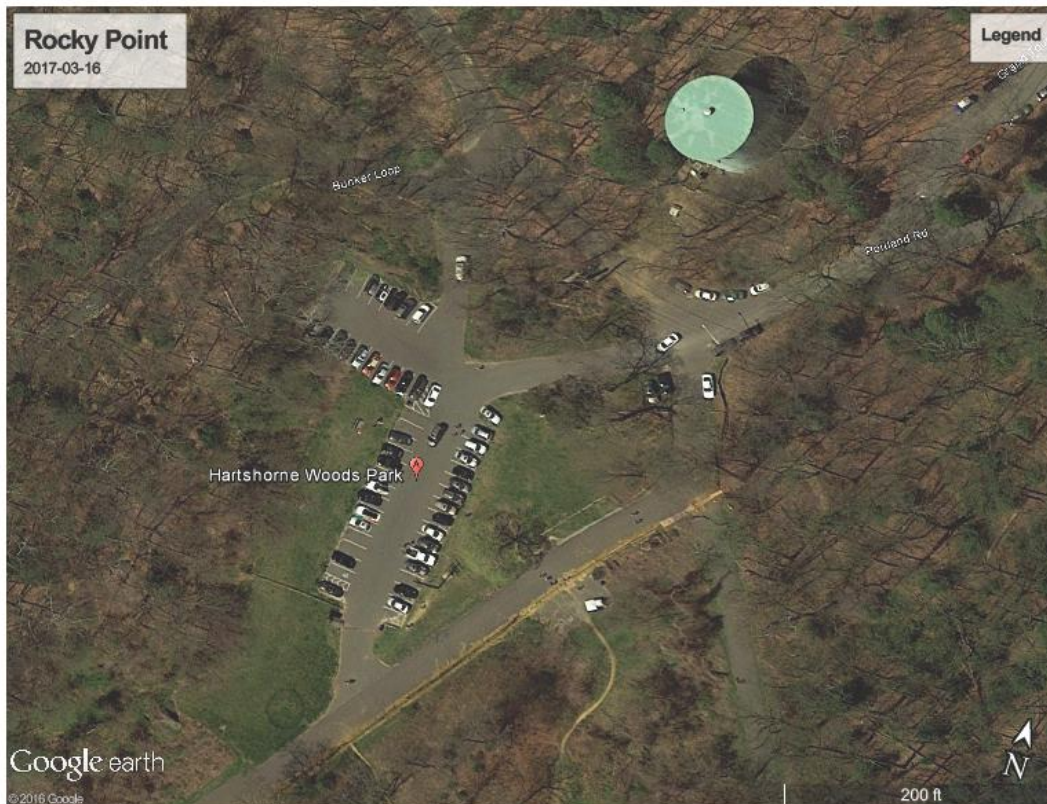
The Natural Resource Conservation Service (NRCS) soil report indicates Phalanx loamy sand. The soils are highly erodible, and will need stabilization when disturbed. The improvements avoid the site's steeper slopes.

Currently, storm water from the paved lot area collects unattenuated and untreated. Storm water will be collected on-site to a landscaped recharge basin, which will allow water to seep into the ground. This management of the water will reduce high water volumes and velocities entering local waterways.

**PROJECT STATUS: Construction is scheduled to begin the week of August 20<sup>th</sup> 2018. Completion of the work is expected Spring 2019.**

**CONTACT INFORMATION:** Laura Lieneck, LLA, Senior Landscape Architect  
Monmouth County Park System,  
Acquisition & Design Department  
[llieneck@monmouthcountyparks.com](mailto:llieneck@monmouthcountyparks.com)

See [www.monmouthcountyparks.com](http://www.monmouthcountyparks.com) for additional information about the MCPS and Hartshorne Woods Park.



**EXISTING PARKING LOT AT ROCKY POINT**